

Working with Gold

The Birds of Sowton Industrial Estate, 13 September 2018 Risk Assessment

Tony Whitehead, of the RSPB and a local performance artist, has kindly offered to lead a walk around Sowton Industrial Estate “to discover the birds, both real and imaginary, of one of Exeter’s most neglected ecosystems.” Many of the roads are named after birds. The aim of the event is to connect people who work in Sowton, and others in Exeter, with their local environment.

The event will be held after the working day, between 5-7pm on Thursday 13 September 2018, starting and ending at the M5 J30 Services. It will go ahead unless the Met Office has released a severe weather warning for the area.

Generic hazards for the event are:

1. Heavy traffic at the services and on the industrial estate during the rush hour
2. Pavement curbs
3. Anyone associated with the event being taken ill
4. Attracting anti-social behaviour

Numbers have been limited by asking participants to sign up for the event. They have also been provided with some guidance. There is also information available on the Working with Gold website.

The event has not been advertised to families. If any under-16s do attend, their parents or responsible adults will be advised that they must keep their children with them at all times.

Location	Risk	Action
Gathering at J30 services	Traffic at the Services. Blocking paths for other users.	A marshall will ensure participants keep away from the road and do not block the Services entrance.
Walking around industrial estate	Traffic. Pavement curbs. Blocking pavements.	Participants will be briefed about road safety. A marshall in hi-vis will assist with road crossing. Participants will be briefed re being aware of other pavement users.
	Illness	A marshal will be available at all times with a charged mobile phone in order to summon appropriate medical or other assistance.

Fire Risk Assessment

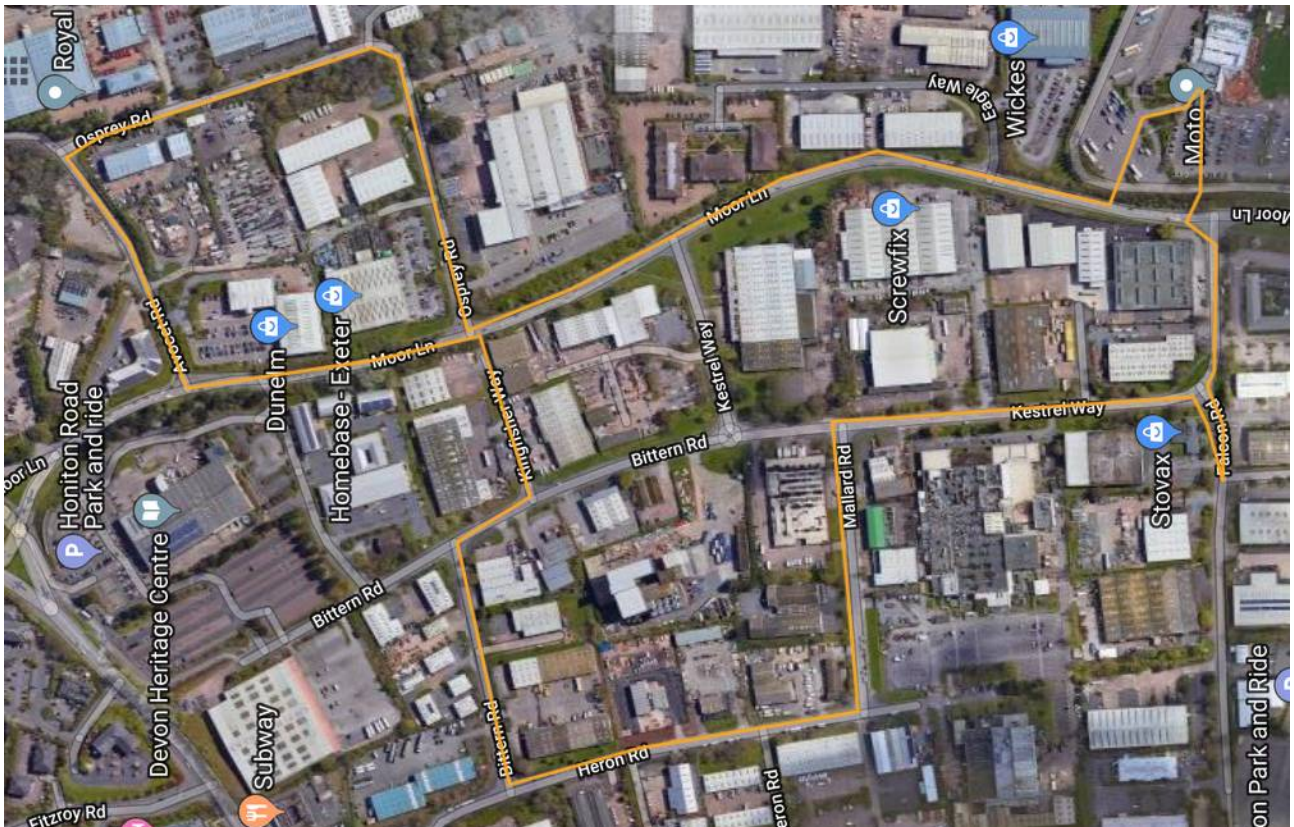
The event is out-of-doors with clear and easy exit. There will be no naked flames.

Traffic

Numbers of participants have been limited. The traffic generated will be tiny compared with local traffic.

Route map

The gathering location is at the top right, and the route will be followed clockwise.



Working with Gold is supported by Exeter City Council



If you would like to know more about this project please contact:
Clare Bryden, 07794 505707, WorkingwithGold@gmail.com, WorkingwithGold.org.uk